

- 1 RETRACTABLE CANVAS CANOPY
- 2 BRACING TENSILE CABLES
- 3 STEEL PIVOT STRUTS
- 4 2"x2" STEEL FRAME
- 5 ROLLING WALL
- 6 FURNITURE WALL, STORAGE, COUNTER AND PASS THROUGH WINDOW
- 7 PIVOT WALL - SLIDE THEN SWING
- 8 PIVOT WALL



PROJECT  
**T.O.G.S.**  
 TEMPORARY OUTDOOR GALLERY SPACE  
 TYPE

NEW CONSTRUCTION

LOCATION  
**AUSTIN, TX**

DATE  
**2008**

SIZE  
**200 SQ.FT.**

COST  
**\$ 5,000**

The idea of a temporary outdoor gallery space [togs] is predicated upon four key ideas: [1] the modular and affordable fabrication of a unit that can be effectively delivered to the site and be “unpacked” to expand its space upon arrival; [2] to provide a hyper flexibility through an operable object: to flip, fold, slide and shift its surface planes to allow for diverse occupations and usages by the individual curators and artists, maximizing diversity within a single entity; [3] the double ability for the unit to be fabricated as a 10’x10’ unit or a 10’x20’ unit with consistency and similar flexibility; and [4] the ability for the aggregation of repetitive unit to produce an urban system of extended courtyards, service alleys and arcades. The elements of the temporary outdoor gallery space include an oversized canvas canopy; a primary welded steel structural cage; a series of flexible and expanding walls [that fold, slide, flip and shift] lined with inner surfaces for display and outer surface for super graphics establishing, boundary, signage, a navigational infrastructure and the potential for overflow display; a storage wall that contains a securable storage cabinet, a retractable counter, and a pass-thru window; and a wood plinth that articulates a threshold between inside and out. The entire unit is rested upon a field of self-leveling and lockable casters providing for easy movement and adaptation of the unit within its context and collective configuration.

TEMPORARY OUTDOOR GALLERY SPACE [TOGS]

**DELIVERY**

THE IDEA OF A TEMPORARY OUTDOOR GALLERY SPACE [TOGS] IS PROPOSED UPON FOUR KEY IDEAS: (1) THE MODULAR AND AFFORDABLE FABRICATION OF A UNIT THAT CAN BE EFFECTIVELY DELIVERED TO THE SITE AND BE UNPACKED TO SPAN ITS SPACE UPON ARRIVAL; (2) TO PROVIDE A HYPER FLEXIBILITY THROUGH AN OPERABLE OBJECT TO FLIP, FOLD, SLIDE AND SHIFT ITS SURFACE PLANES TO ALLOW FOR DIVERSE OCCUPATIONS AND USAGES BY THE INDIVIDUAL, CURATORS AND ARTISTS; (3) TO ALLOW VISIBILITY WITHIN A SINGLE ENTITY; (4) THE DOUBLE ABILITY FOR THE UNIT TO BE FABRICATED AS A 10'X10' UNIT OR A 10'X20' UNIT WITH CONSISTENCY AND SIMILAR FLEXIBILITY; AND (5) THE ABILITY FOR THE ASSEMBLY OF MULTIPLE UNITS TO PRODUCE AN URBAN SYSTEM OF EXTENDED COURTYARDS, SERVICE ALLEYS AND ARCADES.

**BOX SLIDES**

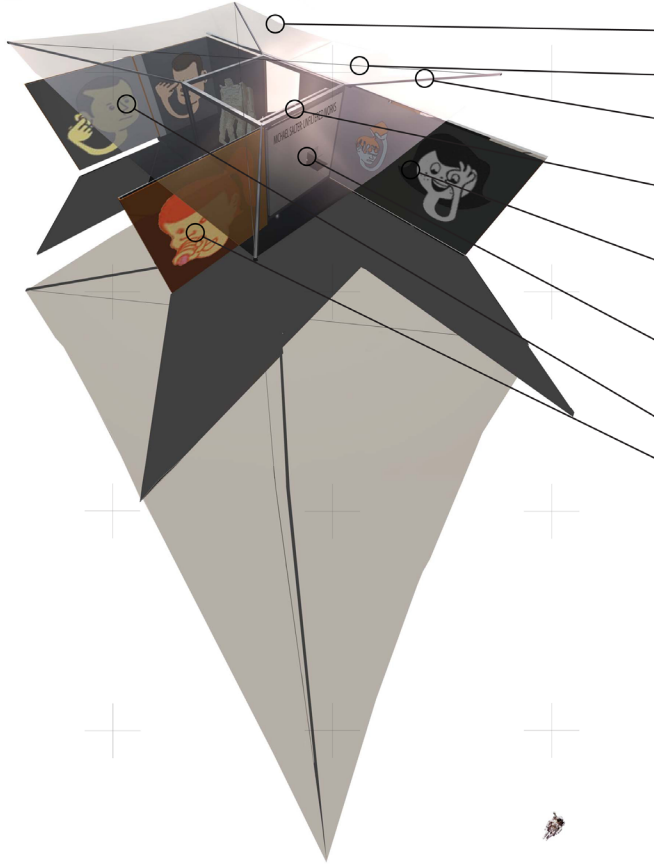
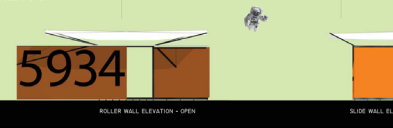
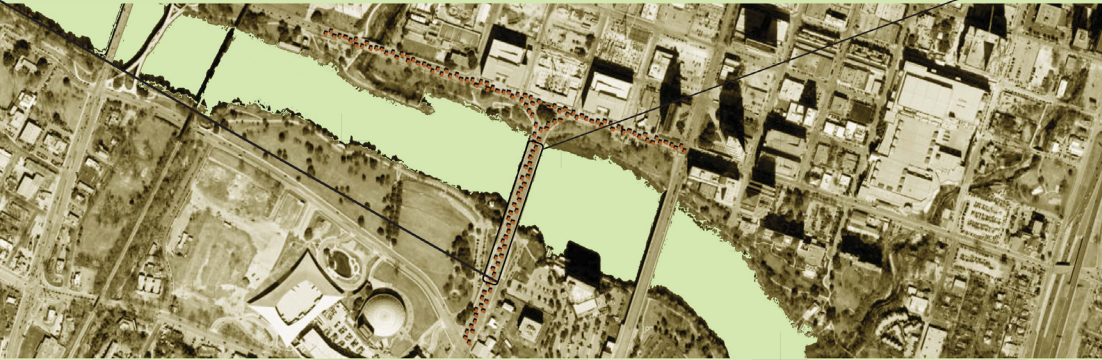
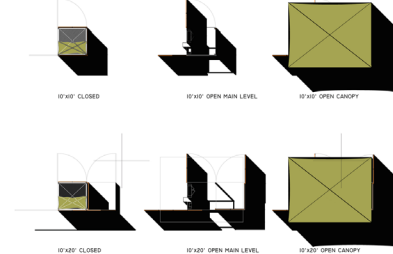
THE ELEMENTS OF THE TEMPORARY OUTDOOR GALLERY SPACE INCLUDE AN OVERSIZED CANVAS CANOPY, A PRIMARY WELDED STEEL STRUCTURE, A SERIES OF FLEXIBLE AND EXPANDING WALLS (THAT FOLD, SLIDE, FLIP AND SHIFT) LINED WITH INNER SURFACES FOR DISPLAY AND OUTER SURFACES FOR SIGNAGE, LIGHTING, BOUNDARY, SIGNAGE, A NAVIGATIONAL INFRASTRUCTURE AND THE POTENTIAL FOR EXPANSION. A STORAGE CABINET THAT CONTAINS A SECURABLE STORAGE CABINET, A RETRACTABLE COUNTER, AND A PASS THROUGH WINDOW AND A WOOD PLANTY THAT ARTICULATES A THRESHOLD BETWEEN INSIDE AND OUT. THE ENTIRE UNIT IS HOSTED ON A FLOOR OF SOLID LEVELING AND LOCKABLE CASTERS PROVIDING FOR EASY MOVEMENT AND ADAPTATION OF THE UNIT WITHIN ITS CONTEXT AND COLLECTIVE CONFIGURATION.

**ROOF UNFOLDS**

THE SYSTEMS WORKS AS A CLOSED AND OPEN ENTITY. WHEN CLOSED, THE UNIT IS A 10'X10' VOLUME. THE CANOPY HAS FOUR CORNER LOCKABLE PINS THAT PIVOT BACK OVER THE UNIT TO ALLOW THE CANVAS CANOPY TO COLLAPSE AND PACK WITHIN THE BOX. WITH A SECURED CHAIN-LINE ROOF THE SLIDES ITS PIVOTED HALVES APART LONGITUDINALLY TO PRODUCE A 10'X20' UNIT. HERE THE LONGITUDINAL WALLS FLIP UP WITH DOUBLE BRACING PANELS, OR SLIDE LONGITUDINALLY WITH A MASSIVE ROLLER COUNTER, AND A PASS THROUGH WINDOW.

**WALLS OPERATE**

THE UNIT AS AN ASSEMBLY OF COLLECTED PARTS CAN BE DISASSEMBLED AND REUSED. ITS SUSTAINABILITY COMES THROUGH THE TEMPORARY DEPENDENCY OF ITS MATERIALS AND THE EFFICIENCY OF ITS STRUCTURE.



- 1 RETRACTABLE CANVAS CANOPY
- 2 BRACING TENSILE CABLES
- 3 STEEL PIVOT STRUTS
- 4 7x7 STEEL FRAME
- 5 ROLLING WALL
- 6 FURNITURE WALL WITH STORAGE, COUNTER AND PASS THROUGH WINDOW
- 7 PIVOT WALL - SLIDE THEN SWING
- 8 PIVOT WALL



MODEL PHOTOS  
CLOSED ELEVATIONS



VIEWS - SINGULAR + COLLECTIVE

SITE PLAN



CLOSED



OPEN

OPEN ELEVATIONS

COMPETITION BOARD

CONCEPTUAL DIAGRAMS



VIEW OF PAVILION IN OPEN POSITION

The system works as a closed and open entity. When closed, the unit is a 10'x10'x9' volume. The canopy has four corner lockable pipes that pivot back onto the unit to allow the canvas canopy to collapse and pack within. The box, [with a secured chain-link roof] then slides its nested halves apart longitudinally to produce a 10'x20' unit. Here the longitudinal walls fully flip open with double swinging panels, or slide longitudinally with a massive roller wall. The result is an expansion of the perimeter to allow a diffused boundary of the togs and its surrounding. The expansive field allows for a porous gallery with expansive arms embracing the street, the public and the artwork. The unit can unpack and repack as necessary to provide the flexibility of spatial configuration and the overnight security programmatically necessary. The unit as an assembly of collected parts can be disassembled and reused. Its sustainability comes through the temporary deployment of its materials and the efficiency of its structure. Thus the togs is a hyper flexible unit allowing for a maximization of the minimum: a flexible organism, adaptable and responsive. It responds to the process of fabrication and installation, the site, the art, the curator and the user to produce a temporary outdoor gallery space.

VIEW OF TOGS MODEL

